



ATID Co., Ltd

User Guide for Keyboard Wedge

User manual for Keyboard wedge

ATID Co., Ltd

SW Team

2021-07-14

		User Guide for Keyboard Wedge					
User manual for Keyboard wedge					Company	ATID Co., Ltd	
DOC		Author	SW Team	Date	2021-07-14	Version	V 1.0

Document Revision Record

Version	Date	Revision ¹	Description of change ²	Writer
V 1.0	2021-07-14	Draft	Initial release	SW Team

¹ Revision: Define the contents are addition / modification/ deletion.

² Description: Describe revised page number and contents.

		User Guide for Keyboard Wedge					
User manual for Keyboard wedge					Company	ATID Co., Ltd	
DOC		Author	SW Team	Date	2021-07-14	Version	V 1.0

Table of Contents

1. Introduction	4
2. Initial setup	5
2.1.0 Install the application and set permission access.....	5
2.1.1 Add Keyboard wedge to the keyboard list in the device.....	7
2.1.2 Enable Keyboard Wedge feature.....	8
2.1.3 Validation	9
2.1.4 Hardware Key Mapping.....	9
3. Keyboard Wedge in action.....	10
3.1 Reading RFID.....	10
3.1.1 Reading Barcode.....	11
3.2 Keyboard Wedge settings UI.....	12
3.2.1 Drag the top of the screen to enter the settings screen.....	12
4. Common Issues	13
4.1 Error in RFID Demo application.....	13
4.1 Barcode Beam upon Gun Trigger key press.....	14

1. Introduction

This document explains the user how to install the Keyboard wedge application, initial setup and usage of keyboard wedge feature in the AT907.

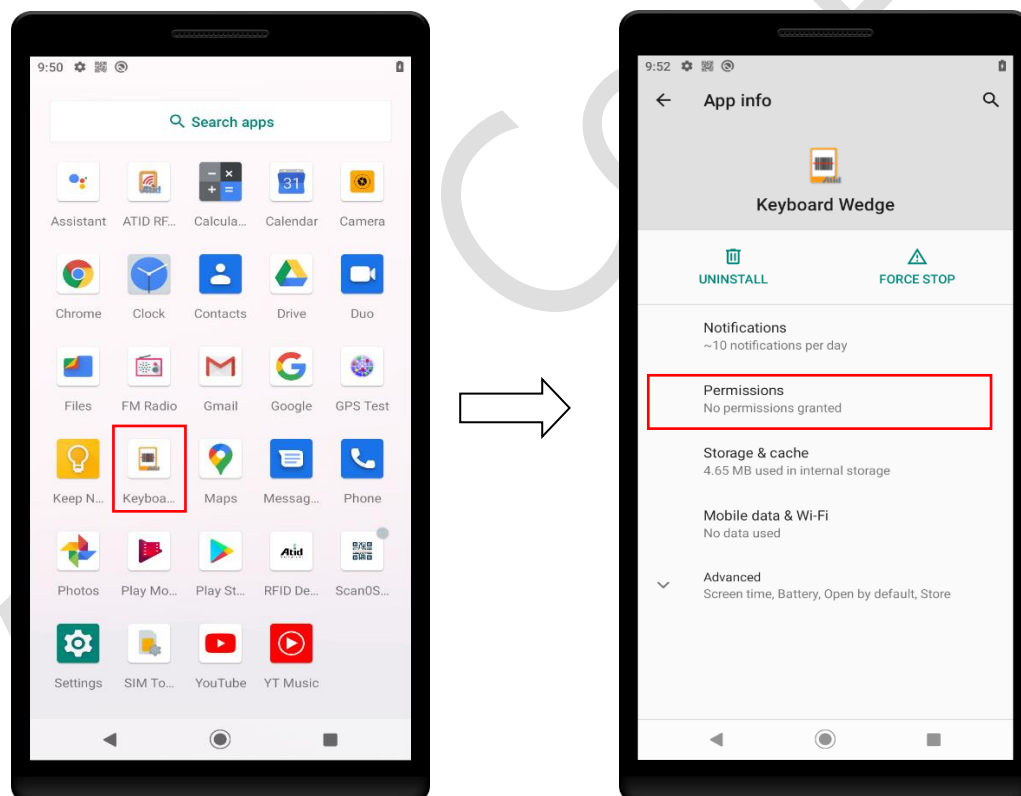
2. Initial setup

2.1.0 Install the application and set permission access.

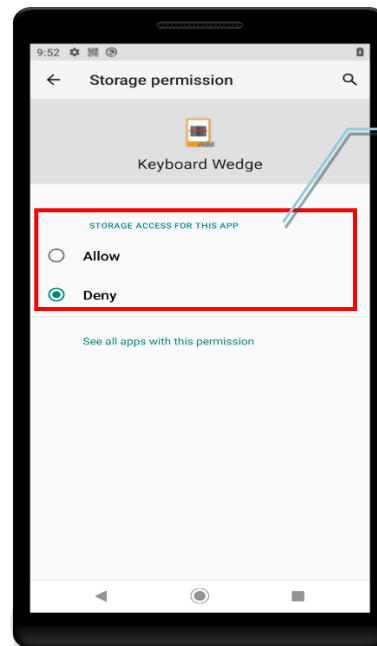
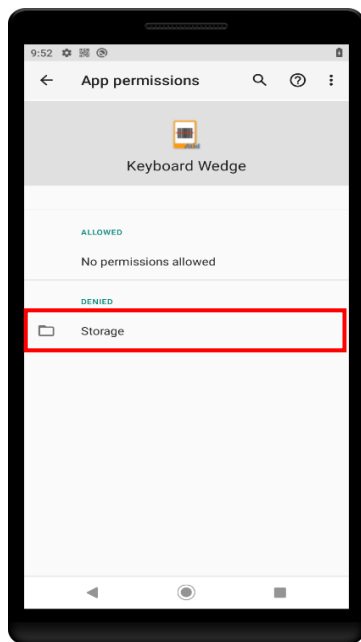
Install the Keyboard wedge application (if not installed) and provide application required permission access.

note: keyboard wedge installation apk can be find in the SDK (<SDK root folder>/Bin)

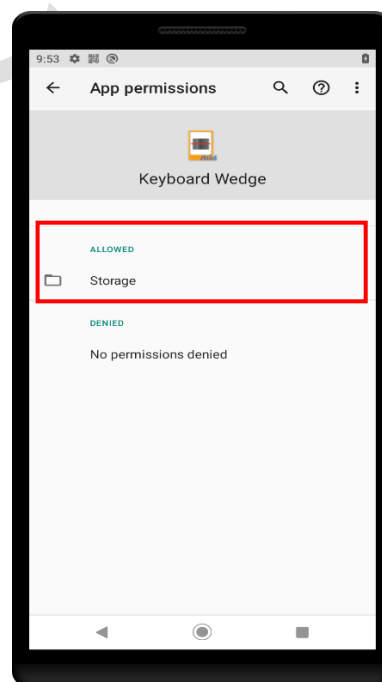
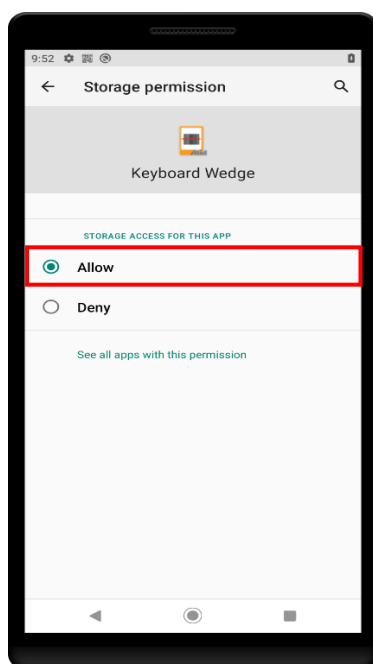
Set the required permission access, ("**storage**" permission is mandatory)



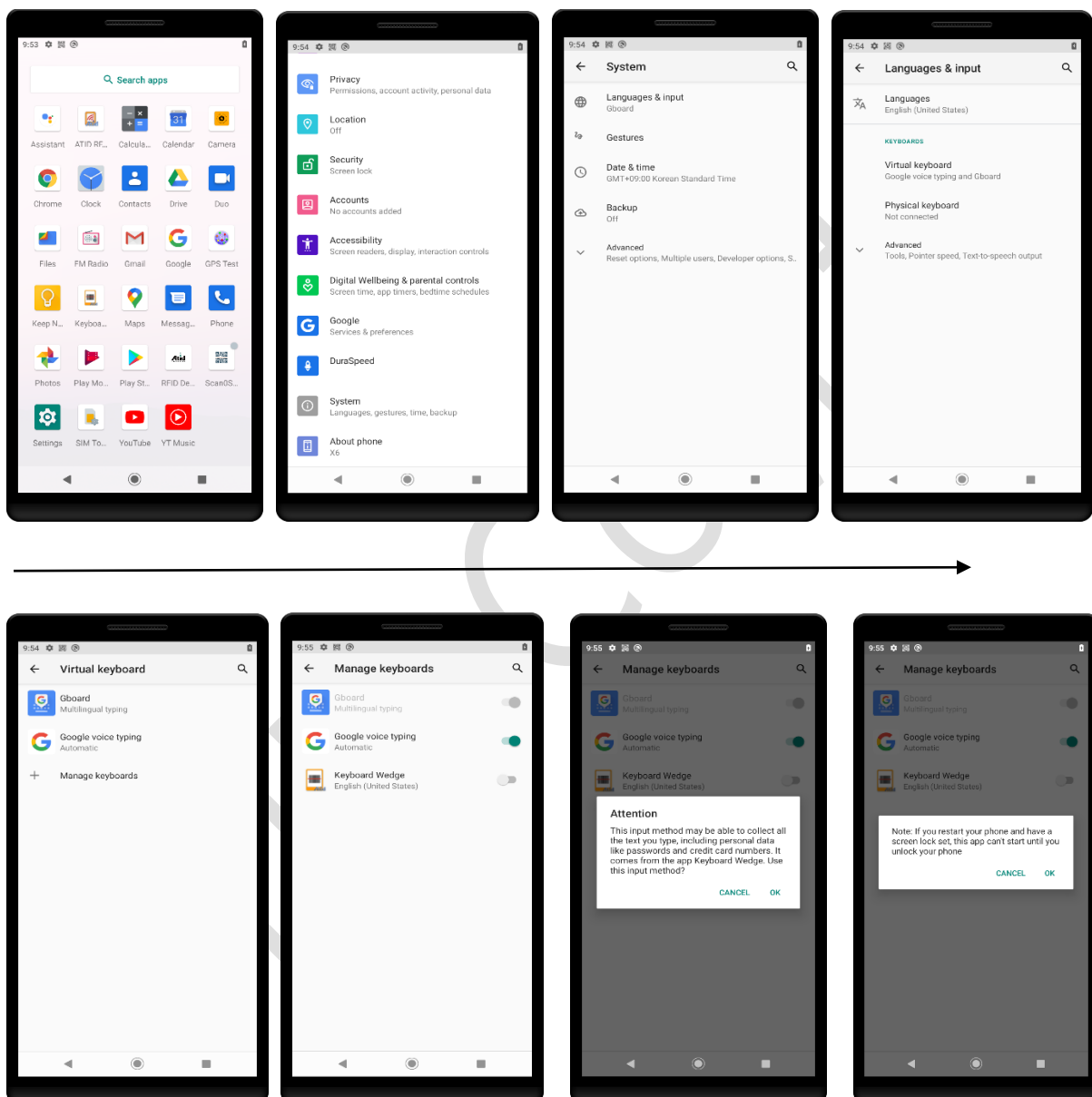
Provide access to Storage:




*By default,
storage access is
denied.*



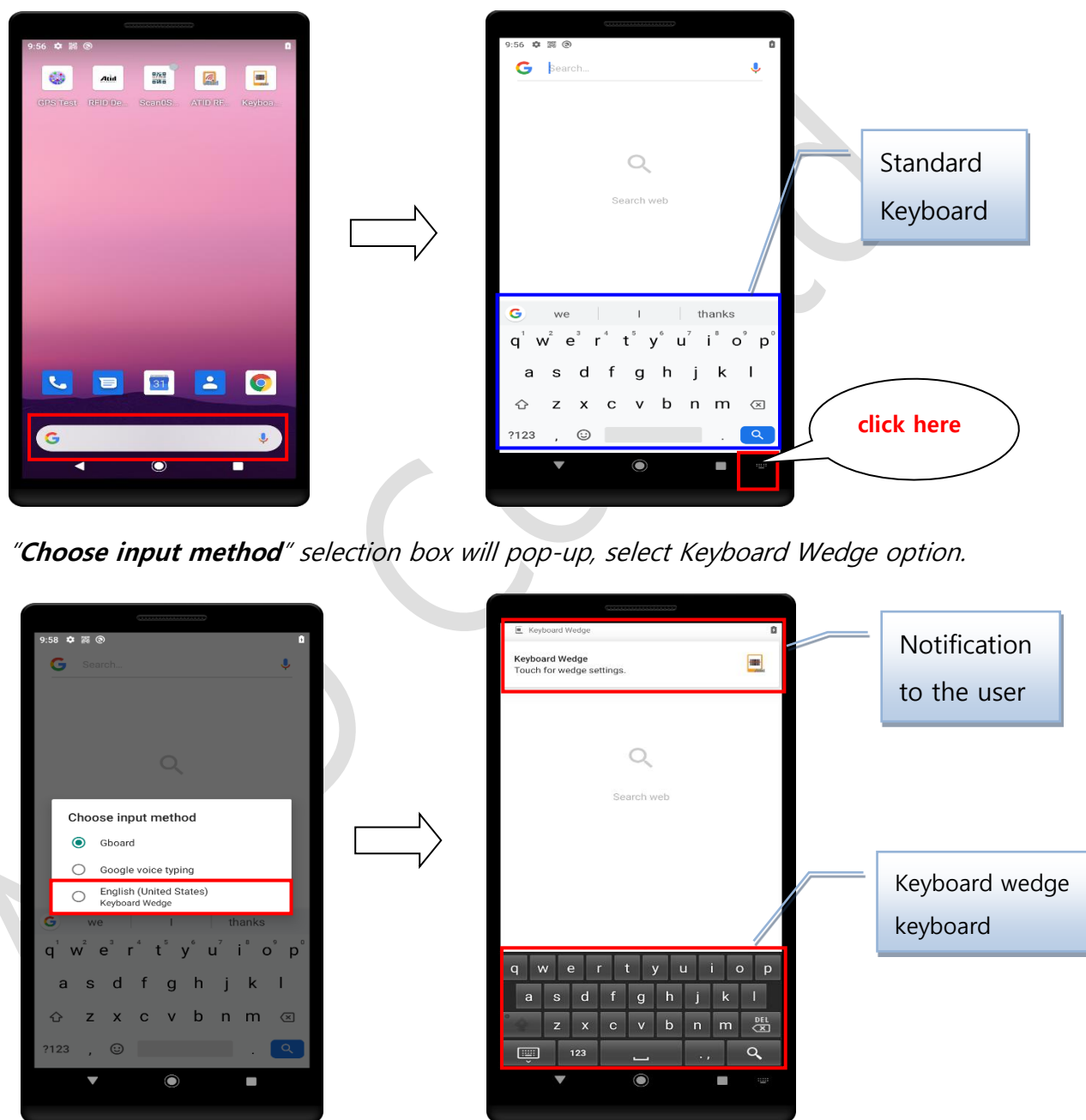
2.1.1 Add Keyboard wedge to the keyboard list in the device.



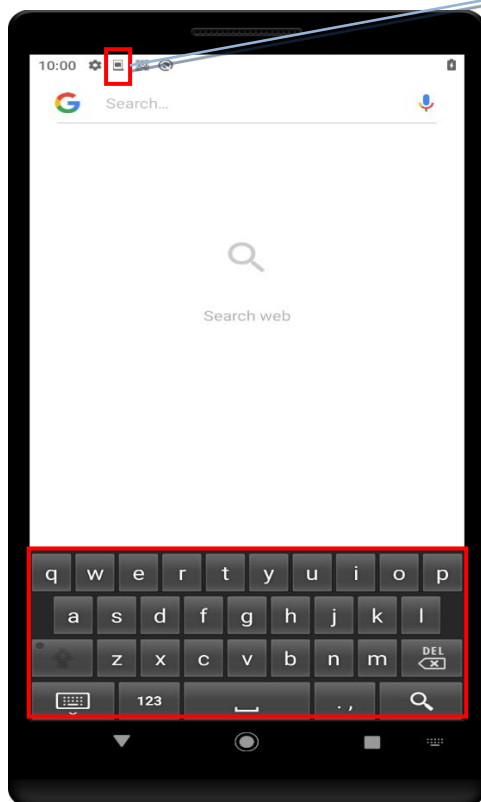
		User Guide for Keyboard Wedge					
User manual for Keyboard wedge					Company	ATID Co., Ltd	
DOC		Author	SW Team	Date	2021-07-14	Version	V 1.0

2.1.2 Enable Keyboard Wedge feature.

click on any text field (example shown here is search field)



2.1.3 Validation



Keyboard wedge
Notification Icon

note: Icon in the notification bar and keyboard indicates that Keyboard wedge is enabled successfully.

2.1.4 Hardware Key Mapping

Note: In the Keyboard wedge hardware keys are mapped as below,

LEFT SCAN Key : **Barcode**

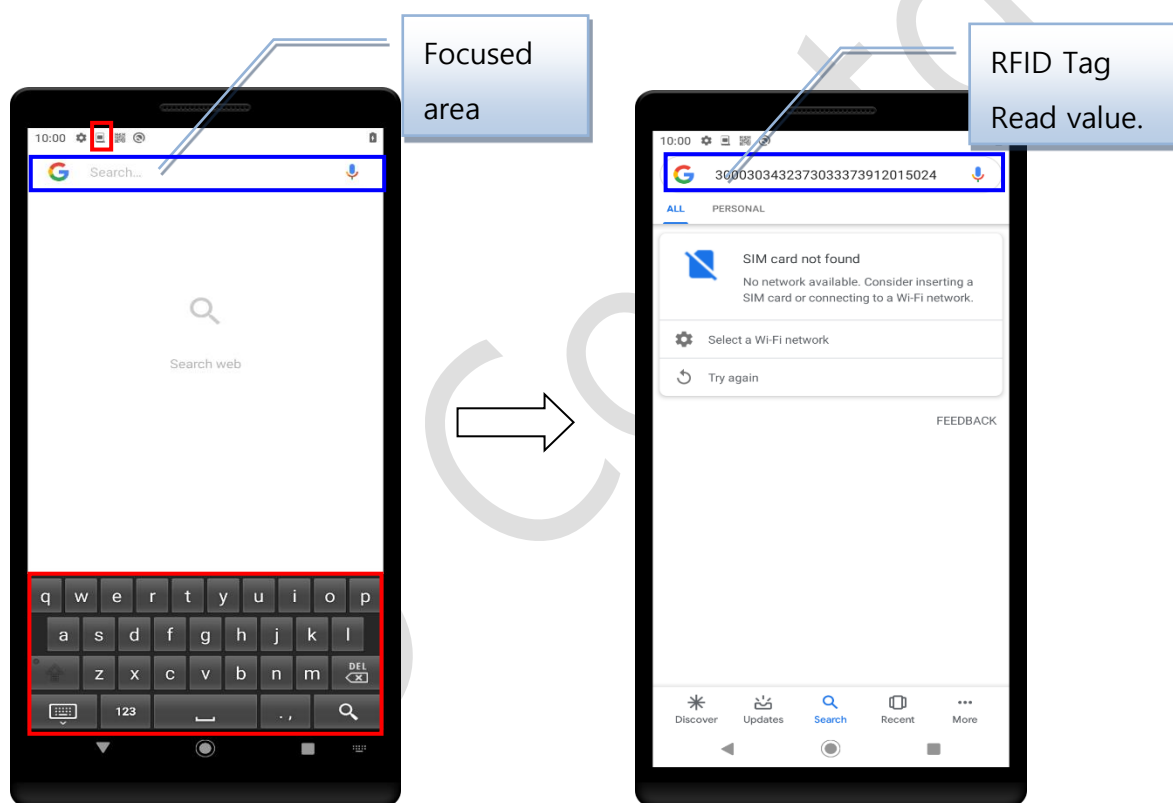
RIGHT SCAN Key : **Barcode**

GUN TRIGGER Key : **UHF**

3. Keyboard Wedge in action

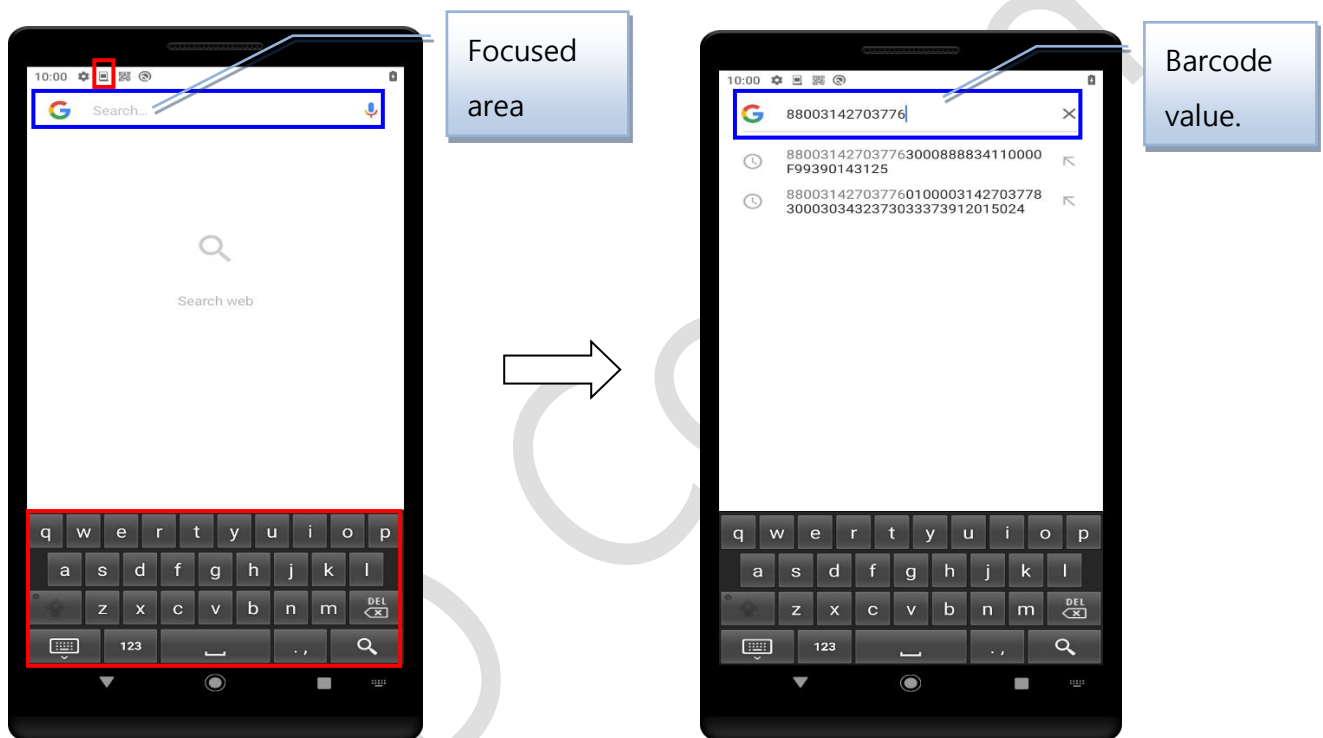
3.1. Reading RFID.

(Make sure that Keyboard wedge is enabled: observe the notification icon and keyboard wedge keyboard) Get a focus on any text field and scan the RFID Tag.



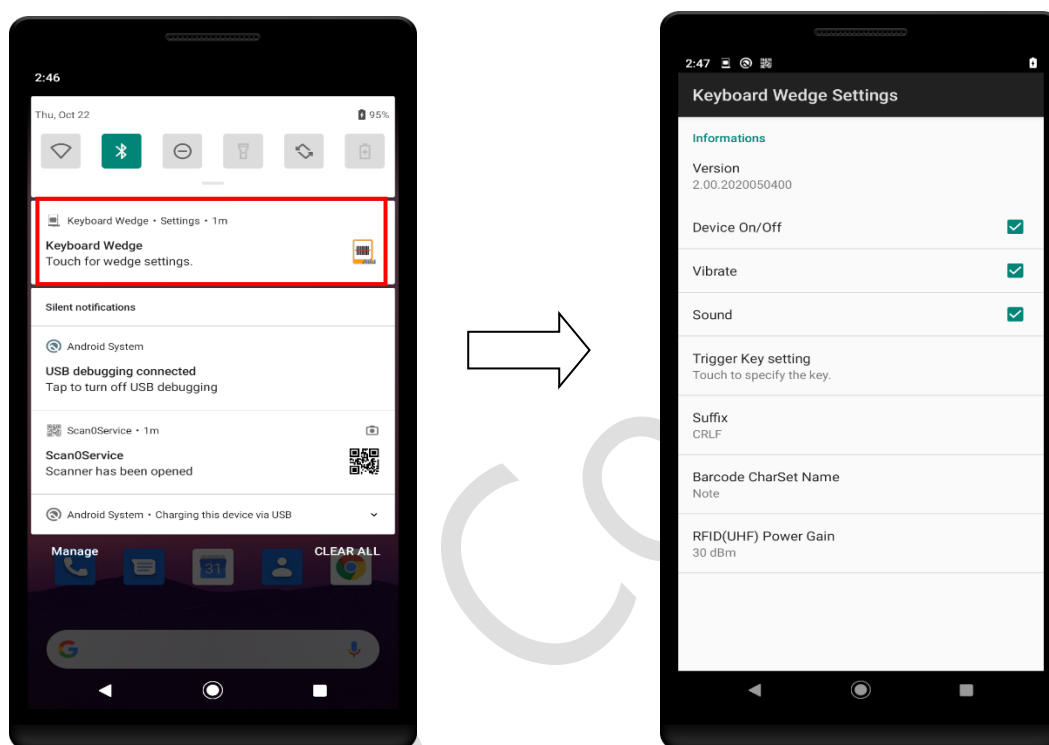
3.1.1 Reading Barcode

(Make sure that Keyboard wedge is enabled: observe the notification icon and keyboard wedge keyboard) Get a focus on any text field and scan the RFID Tag.




3.2. Keyboard Wedge settings UI

3.2.1 Drag the top of the screen to enter the settings screen.



Label name	Description
Version	Version of keyboard wedge
Device On/Off	UHF Module power control option (power on/off).
Vibrate	Vibrate while reading RFID Tag
Sound	Beep sound while reading RFID Tag
Trigger Key setting	N/A
Suffix	Set up the Suffix (default is CRLF) for sending together with Tag data. ex) None, CRLF, Space, Tab
Barcode CharSet Name	N/A
RFID(UHF)Power Gain	Set Tx power of UHF module (default is 30dBm).

		User Guide for Keyboard Wedge					
User manual for Keyboard wedge					Company	ATID Co., Ltd	
DOC		Author	SW Team	Date	2021-07-14	Version	V 1.0


4. Common Issues

4.1 Error in RFID Demo application.



If Keyboard Wedge is already running, RFID Demo app will through an error.

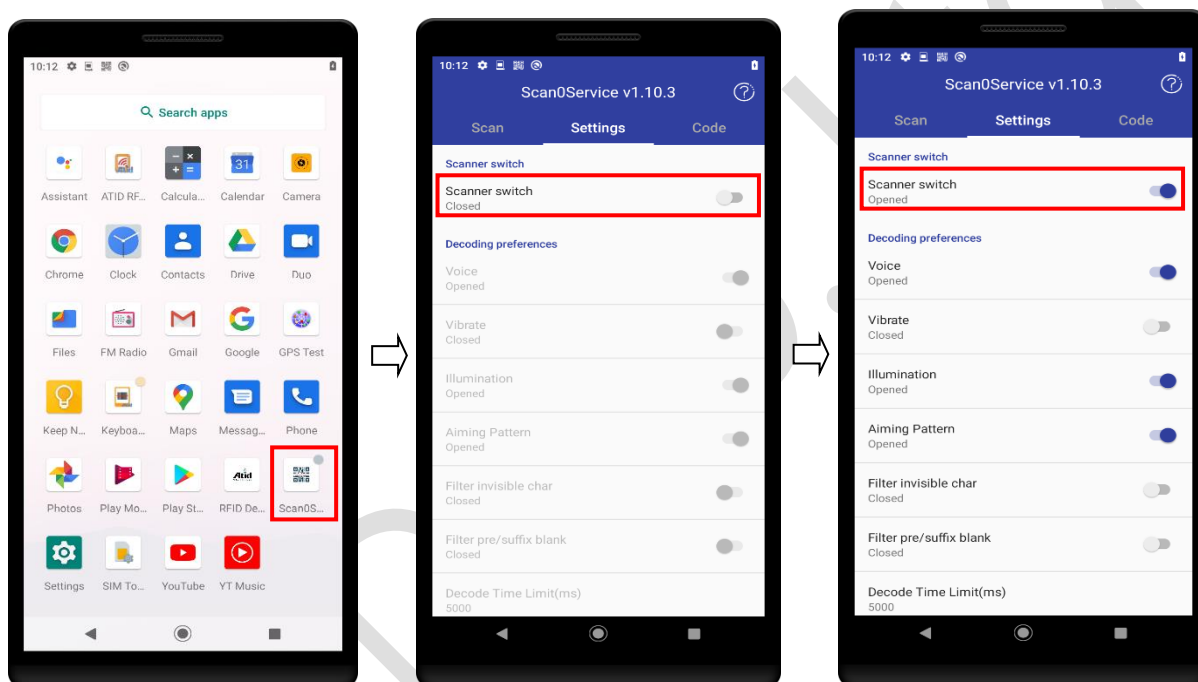
Note: make sure that Keyboard wedge is disabled before using RFID Demo application.

		User Guide for Keyboard Wedge					
User manual for Keyboard wedge					Company	ATID Co., Ltd	
DOC		Author	SW Team	Date	2021-07-14	Version	V 1.0

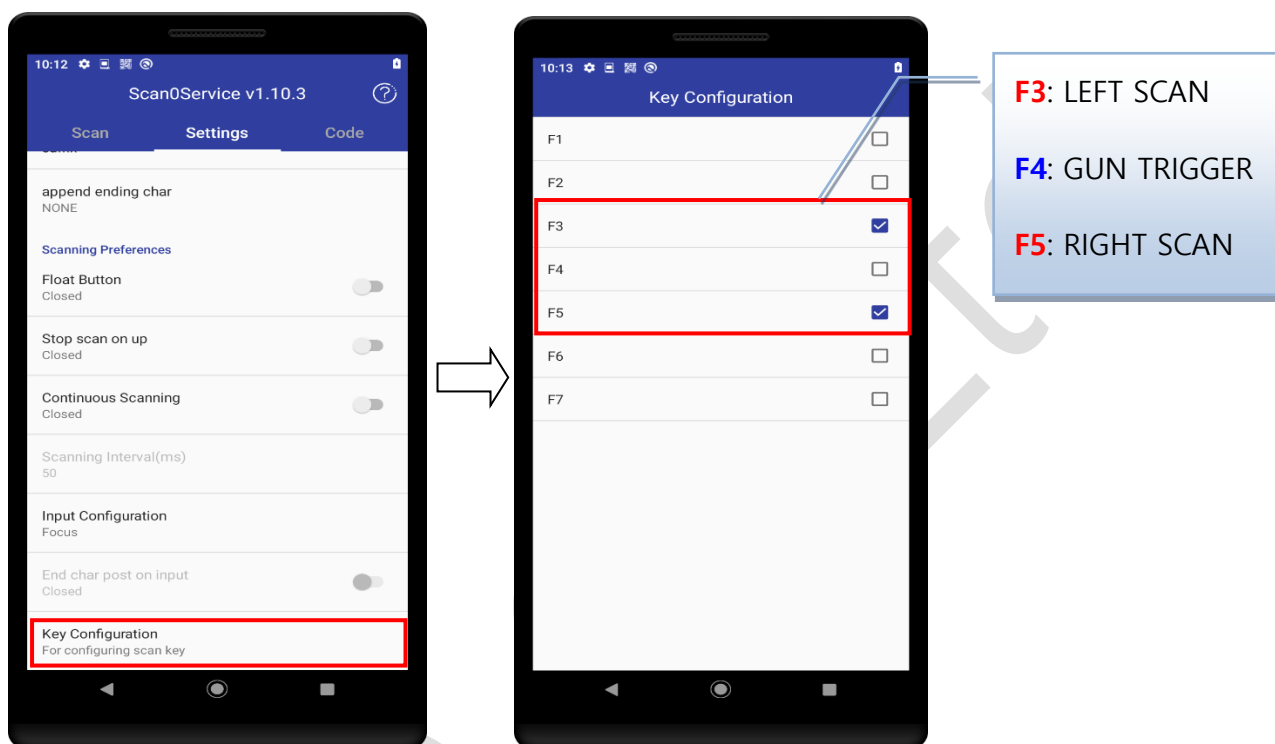
4.1 Barcode Beam upon Gun Trigger key press.

Currently when the keyboard wedge is enabled Gun Trigger key is mapped to read RFID, If the barcode beam is ON do not be panic, please make sure the Gun Trigger key is unchecked in the Barcode demo application.

<Home Apps> -> *Scanner0Service v1.10.3* -> *Scanner switch* -> *Key Configuration*



Key Configuration Demonstration:



Application Name	Gun Trigger key status
Keyboard wedge	F4: Uncheck
Barcode Scanner Demo	F4: check



F4: Gun Trigger key is fixed for RFID/UHF (**default**)